



## THE FAIRVIEW

LOT #V2 - 303 HATCH LAKE PKWY

HATCH LAKE  
VALPARAISO

PLAN VARIES SLIGHTLY FROM BELOW



### TWO-STORY PLAN

- + 4 BEDROOM / 2-1/2 BATH
- + APPROX 2,147 SQ FT
- + 1ST FLOOR 957 SQ FT
- + 2ND FLOOR 1,190 SQ FT
- + BASEMENT 957 SQ FT

### INCLUDES

- GRANITE IN KITCHEN
- LVP IN FAMILY ROOM & DEN
- TANKLESS WATER HEATER
- GARAGE DOOR UPGRADE
- DAYLIGHT BASEMENT W/DECK
- FIREPLACE
- 3' GARAGE BUMP OUT

**\$409,500 - LOT INCLUDED**

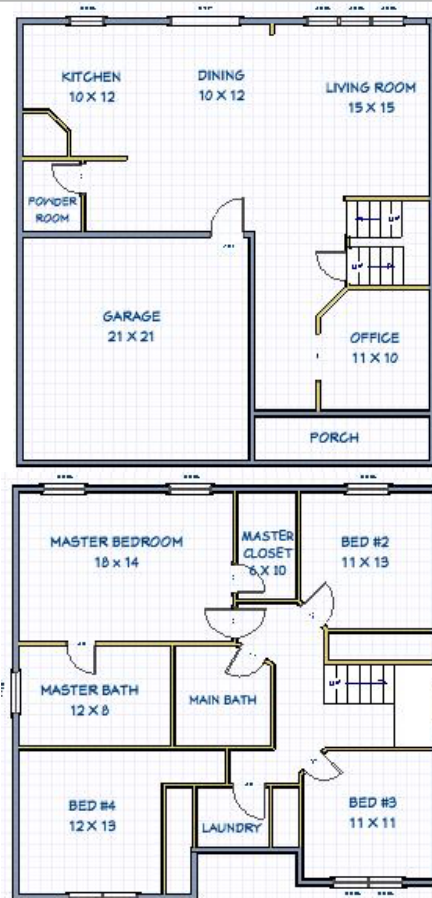


AT SUNSHINE HOMES, WE HELP DESIGN AND BUILD A HOME FROM A HOMEOWNER'S PERSPECTIVE. WE ARE COMMITTED TO PROVIDING PERSONAL ATTENTION THROUGHOUT THE WHOLE HOMEBUILDING PROCESS. YOUR NEEDS AND SATISFACTION ARE OF THE UTMOST IMPORTANCE AT SUNSHINE HOMES, AN ATTRIBUTE OUR PAST AND PRESENT HOMEOWNERS HAVE COME TO VALUE.

CONTACT US AT:

[SALES@HATCHLAKEVALPO.COM](mailto:SALES@HATCHLAKEVALPO.COM)

(QUICKEST RESPONSE)



Copyright of Sunshine Homes, Inc.

