



# THE FAIRVIEW

LOT #83 - 3656 TRAEMORE DRIVE



PLAN VARIES SLIGHTLY FROM BELOW



- TWO-STORY PLAN**
- + 4 BEDROOM / 2-1/2 BATH
- + APPROX 2,140 SQ FT
- + 1ST FLOOR 936 SQ FT
- + 2ND FLOOR 1,204 SQ FT

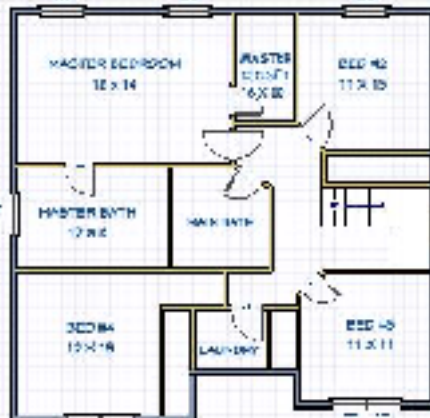
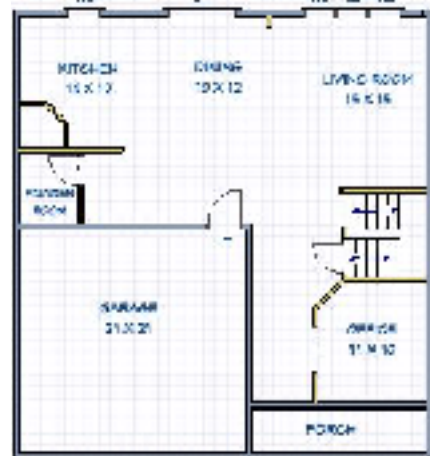
- INCLUDES**
- .3' BUMP OUT ON GARAGE
  - GRANITE IN KITCHEN
  - HARDWOOD IN FAMILY ROOM
  - DAYLIGHT BASEMENT
  - EXTRA WINDOW IN POWDER ROOM
  - CABINET UPGRADE
  - ENLARGED DECK

**\$323,200 - LOT INCLUDED**



AT SUNSHINE HOMES, WE HELP DESIGN AND BUILD A HOME FROM A HOMEOWNER'S PERSPECTIVE. WE ARE COMMITTED TO PROVIDING PERSONAL ATTENTION THROUGHOUT THE WHOLE HOMEBUILDING PROCESS. YOUR NEEDS AND SATISFACTION ARE OF THE UTMOST IMPORTANCE AT SUNSHINE HOMES, AN ATTRIBUTE OUR PAST AND PRESENT HOMEOWNERS HAVE COME TO VALUE.

CONTACT US AT:  
**SALES@HATCHLAKEVALPO.COM**  
 OR VISIT US AT:  
[HATCHLAKEVALPO.COM](http://HATCHLAKEVALPO.COM)  
 219-395-8400



Copyright of Sunshine Homes, Inc.